



## Overview

IM12 is a system with 12 vertical aligned F-tubes, intended to mount in Air Handling Units (AHU) and/or Air-Ducts as Stand or Slide-In Installations

Applications are pollutants degradation, exhaust air treatment, air refreshment, air disinfection and odor elimination for industrial and commercial use.

## Base System IM12-xxx



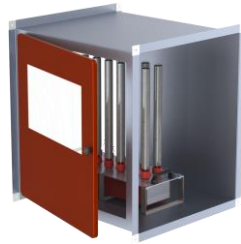
### IM12-xxx Base System

Included are 12 VTN-F Tubes as standard equipment.

-xxx: Power / Controller Connector to choose



Example illustration: System mounted in an air-duct as slide-in



Example illustration: System mounted standing in an air-duct

## IM12-xxx Power / Controller Connector



### -C1

C14 socket ; Error Indicator; Switch ; Fuse Box



### -C1C

C14 socket ; Error Indicator; Switch ; Fuse Box ; Connector for Error signal



### -R1

3pol Round-Socket ; Error Indicator; Switch ; Fuse Box



### -R1C

3pol Round-Socket ; Error Indicator; Switch ; Fuse Box ; Connector for Error signal

## Other Connector Options on request

## Specifications

Supply voltage	230VAC 50Hz or 115VAC 60Hz
Nominal Power Rating	42 W
Bentax® Tubes	Tubes VTN
Air treatment up-to *	~ 9000 m <sup>3</sup> /h

\* Depending on: Air Quality, VOC, VVOC, Air Change Rate

## IM12 Base System Order Numbers

Voltage	230V	115V
Type	Order #	Order #
IM12-C1	IM-12-A0-C1	IM-12-B0-C1
IM12-C1C	IM-12-A0-C1C	IM-12-B0-C1C
IM12-R1	IM-12-A0-R1	IM-12-B0-R1
IM12-R1C	IM-12-A0-R1C	IM-12-B0-R1C

## Mount Options

Type	Order #
IM12-OBF	IM-12-1Z-01
IM12-OMF	IM-12-1Z-02

Type	Order #
IM12-OSF	IM-12-1Z-03
IM12-OBP	IM-12-1Z-04

## Mounting Options



### IM12-OBF

Set with Foot holder and Handles for installing the System on the floor in Air-Duct or Air Handling Unit



### IM12-OMF

Set with Mount Frame for installing the System outside of an Air-Duct or Air Handling Unit.



### IM12-OSF

Safety Frame  
**Mandatory with IM12-OMF**  
Optional with IM12-OBF



### IM12-OBP

Blind-Plate with Handles  
To cover slide-in mount place when system must be taken out for maintenance ...

## Floor Standing Mounting Combinations

### IM12-xx and IM12-OBF = Floor Standing



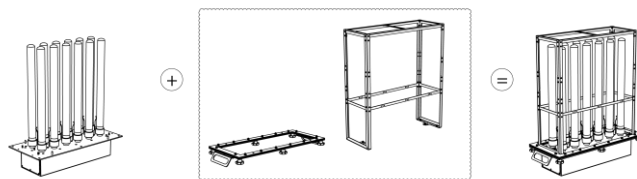
### Floor Standing with Option IM24-OSF



## Outer Panel Mounting (Slide-In) Combinations

### IM12-xx and IM12-OMF with IM12-OSF

Must be ordered together



## Dimensions mm [inch]

