

Overview

IM16 is a system with 16 vertical aligned F-tubes, intended to mount in Air Handling Units (AHU) and/or Air-Ducts as Stand or Slide-In Installations

Applications are pollutants degradation, exhaust air treatment, air refreshment, air disinfection and odor elimination for industrial and commercial use.

Base System IM16-xxx



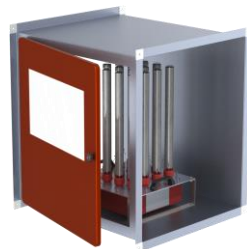
IM16-xxx Base System

Included are 16 VTN-F Tubes as standard equipment.

-xxx: Power connector and Control unit equipment to choose



Example illustration: System mounted in an air-duct as slide-in



Example illustration: System mounted standing in an air-duct

IM16-xxx Power Connector & Controller



-C1

Connection Panel, C14 socket ; Error Indicator; Switch ; Fuse Box



-C1C

Connection Panel, C14 socket ; Error Indicator; Manual/Auto switch ; Fuse Box ; Connector for remote on-off & Error output; System equipped inside with Controller Board

Specifications

Supply voltage	230VAC 50Hz or 115VAC 60Hz
Nominal Power Rating	320 W
Bentax® Tubes	Tubes VTN
Air treatment up-to *	12000 m ³ /h

* Depending on: Air Quality, VOC, VVOC, Air Change Rate

Mounting Options



IM16-OBF

Set with Foot holder and Handles for installing the System on the floor in Air-Duct or Air Handling Unit



IM16-OMF

Set with Mount Frame for installing the System outside of an Air-Duct or Air Handling Unit.

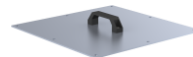


IM16-OSF

Safety Frame

Mandatory with IM16-OMF

Optional with IM16-OBF



IM16-OBP

Blind-Plate with Handles

To cover slide-in mount place during system taken out for maintenance ...

IM16 Base System Order Numbers

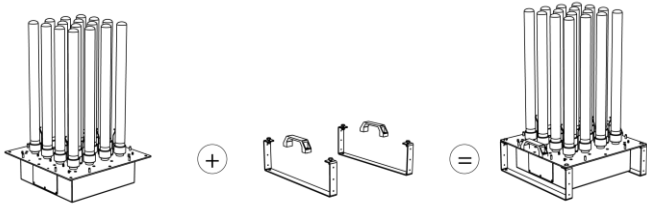
Type	Volt	Order #
IM16-C1	230V	IM-16-A0-C1
IM16-C1	115V	IM-16-B0-C1
IM16-C1C	230V	IM-16-A0-C1C
IM16-C1C	115V	IM-16-B0-C1C

Mount Options

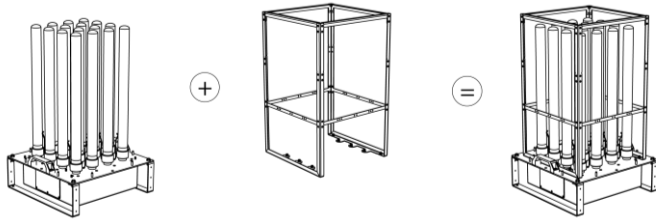
IM16-OBF		IM-16-1Z-01
IM16-OMF		IM-16-1Z-02
IM16-OSF		IM-16-1Z-03
IM16-OBP		IM-16-1Z-04

Floor Standing Mounting Combinations

IM16-xx and IM16-OBF = Floor Standing



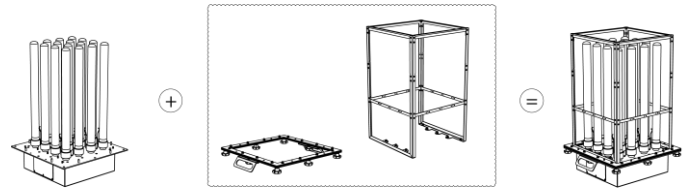
Floor Standing with Option IM24-OSF



Outer Panel Mounting (Slide-In) Combinations

IM16-xx and IM16-OMF with IM16-OSF

Must be ordered together



Dimensions (mm)

