



Overview

The System KH5F consist of a Base-System with five horizontal aligned BENTAX[®] Ionization-Tubes. It can be mounted both outside with a mount-frame or inside in air-duct or Air Handling Unit (AHU). Different power-connection options are available.

Used for Air Cleaning, Air refreshing, Odor Elimination, Degradation of pollutants, Air sterilization, Air decontamination Installations in Air-conditioning systems (HVAC systems), air-conditioning and ventilation systems, and exhaust air-canals in industrial, office buildings, manufacturing facilities, wastewater treatment plants, waste air disposal



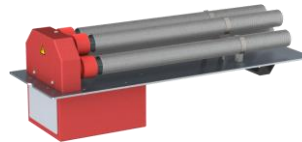
Example illustrations: System mounted in an air-duct

Specifications



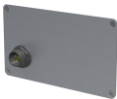
Supply Voltage	230 VAC ± 10% 50Hz 115 VAC ± 10% 60Hz
Nominal Power Rating	86 W
Air Treatment up to *	~ 4000 m ³ /h
Weight	9 kg

* Depending on: Air Quality, VOC, VVOC, Air Change Rate

Base Systems: KH5F



Power Connection Option: KH5F-[y]z

- C1**  Connection Panel, C14 socket ; Error Indicator; Switch; Fuse Box
- C1C**  Connection Panel ,C14 socket ; Error Indicator; Manual/Auto switch ; Fuse Box ; Connector for remote on-off & Error output; with Controller Board
- R**  Connection Panel; Round Plug & Connector 3 poles; IP64, external power controller needed

Other Connector Options on request

Mount-Frame Option: KH5F-y[z]

- F**  Mounting Frame Set

Order Number KH5F System Configuration

Type	Voltage	Order #
KH5F-C1	230	KH-05-A-C1
	115	KH-05-B-C1
KH5F-C1F	230	KH-05-A-C1F
	115	KH-05-B-C1F
KH5F-C1C	230	KH-05-A-C1C
	115	KH-05-B-C1C
KH5F-C1CF	230	KH-05-A-C1CF
	115	KH-05-B-C1CF
KH5F-R	230	KH-05-A-R
	115	KH-05-B-R
KH5F-RF	230	KH-05-A-RF
	115	KH-05-B-RF

KH5F Dimensions [inch] mm

